



GSL ARTIRA

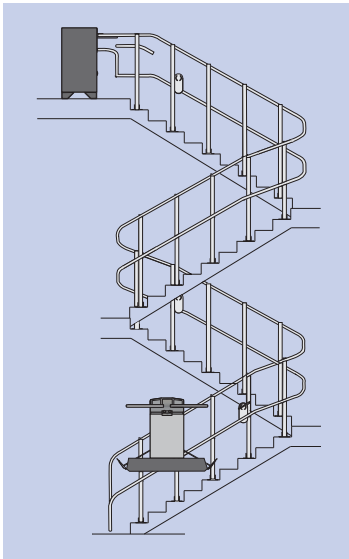
INCLINED PLATFORM LIFT FOR STRAIGHT & TURNING STAIRWAYS



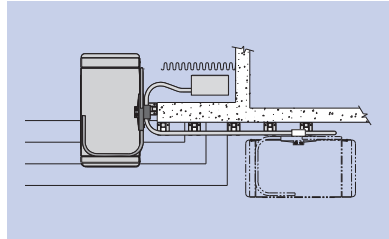
The GSL Artira inclined platform lift provides an advanced access solution for straight, turning or radiating stairways. The attractively styled platform travels along guide rails mounted to the inside or outside of the stairway. Design flexibility allows for extensive customization of the GSL Artira. Suitable for indoor or outdoor applications, the GSL Artira can be installed in commercial and residential applications.

CONFIGURATIONS

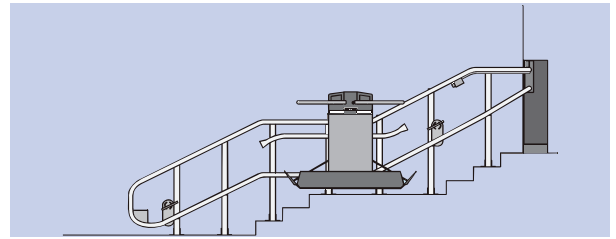
Design Versatility of the GSL Artira



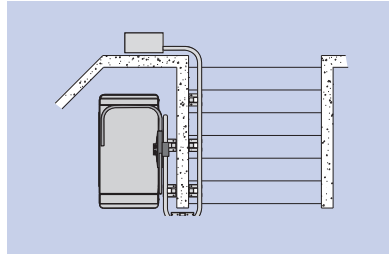
Turning Multi-Stop Stairway



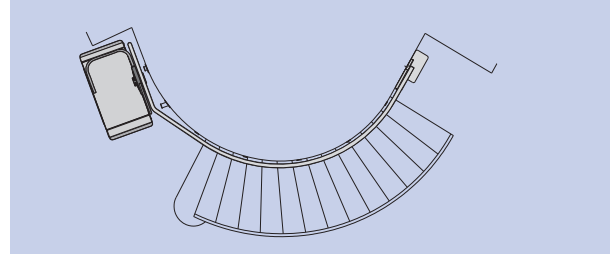
Access onto a Stage



Straight Stairway with Horizontal Section

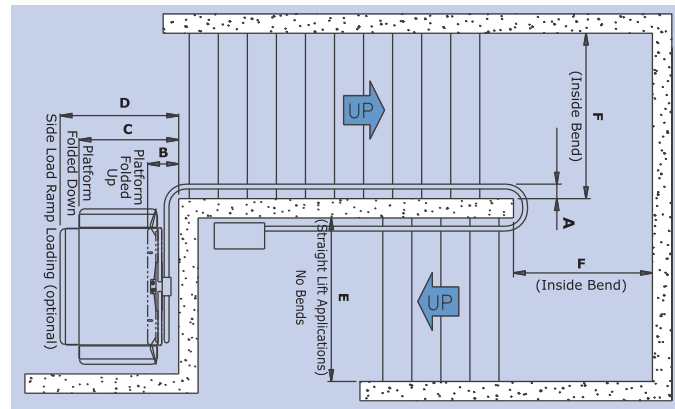


Straight Stairway with Platform Storage off the Stairs



Radiating Stairway

TURNING CLEARANCES



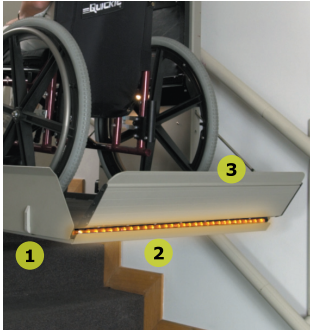
ADA Size

Other Platform Sizes

Dim.	Attachment Method	800 x 1220 mm (31 ¹ / ₂ " x 48")		800 x 1050 mm (31 ¹ / ₂ " x 41 ³ / ₈ ")		800 x 900 mm (31 ¹ / ₂ " x 35 ³ / ₈ ")		700 x 750 mm (27 ¹ / ₂ " x 29 ¹ / ₂ ")	
		mm	in	mm	in	mm	in	mm	in
A	Direct Mount	125	4 ⁷ / ₈	125	4 ⁷ / ₈	125	4 ⁷ / ₈	125	4 ⁷ / ₈
	Tower Mount	150	5 ⁷ / ₈	150	5 ⁷ / ₈	150	5 ⁷ / ₈	150	5 ⁷ / ₈
B	Direct Mount	320	12 ⁵ / ₈	320	12 ⁵ / ₈	320	12 ⁵ / ₈	330	13
	Tower Mount	345	13 ⁵ / ₈	345	13 ⁵ / ₈	345	13 ⁵ / ₈	355	14
C	Direct Mount	1015	40	1015	40	1015	40	900	35 ³ / ₈
	Tower Mount	1040	41	1040	41	1040	41	925	36 ³ / ₈
D	Direct Mount	1230	48 ³ / ₈	1230	48 ³ / ₈	1230	48 ³ / ₈	1115	44
	Tower Mount	1255	49 ³ / ₈	1255	49 ³ / ₈	1255	49 ³ / ₈	1140	45
E	Direct Mount	1035	40 ³ / ₄	1035	40 ³ / ₄	1035	40 ³ / ₄	920	36 ¹ / ₄
	Tower Mount	1060	41 ³ / ₄	1060	41 ³ / ₄	1060	41 ³ / ₄	945	37 ¹ / ₄
F	Direct Mount	1225	48 ¹ / ₄	1185	46 ⁵ / ₈	1185	45 ¹ / ₈	1025	40 ³ / ₈
	Tower Mount	1250	49 ¹ / ₄	1210	47 ⁵ / ₈	1210	46 ¹ / ₈	1050	41 ³ / ₈

FEATURES

Safety Features



- 1 Passenger and pedestrian safety is assured by under-platform sensors that stop the platform if it encounters an obstruction.
- 2 Flashing amber Pedestrian Safety Lights are located at either end of the platform deck, alerting pedestrians of the platform in the stairway, and illuminating the platform threshold for safer boarding.
- 3 Bi-Directional Ramp Sensing detects obstructions on the stairs and prevents a wheelchair from being off-center on the platform deck.

Vandal-Resistant Platform Storage



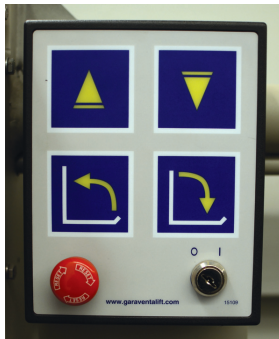
With its remote drive system, the Artira has the most compact folded platform in the industry, leaving maximum clear space on the stairs and landings. When folded, the Artira's platform conceals and protects the folded safety arms and platform controls. For further vandal resistance in public buildings, a robust electric Platform Security Lock can be fitted.

Ultra-Quiet Drive with PCC™ System



The Ultra-Quiet Drive is located in a locked drive box away from the platform and uses a solid state inverter to drive a silent yet powerful 2 horsepower electric motor. The Programmable Configuration Controller (PCC™) allows the Artira to be customized for each stairway application, including slowing at corners and landings, automatic folding, building fire alarm integration and many other sophisticated capabilities.

Smart-Lite Technology™



Garaventa's computer-based lift control system intuitively guides the user through the operating sequence by illuminating the appropriate button to push. Fold and unfold functions are fully automated and work with a simple momentary push of the illuminated button.

Curved Safety Arms



Curved safety arms further enhance passenger safety during platform boarding and while travelling on the stairway. The Artira's safety arms have fully automated operation electronic obstruction sensing.

Design Assistance



www.garventalift.com



Design Hotline: 1.800.663.6556
Toll Free North America



GSL ARTIRA

Need Design Assistance?

Call your local Garaventa Lift representative or our Design Hotline at 1.800.663.6556

SPECIFICATIONS

Platform: Large ADA compliant, mid-size, compact and residential sizes

Power Requirements: 208-240 VAC, 50/60 Hz on a dedicated circuit (North America = 20 Amp / International = 16 Amp) | Auxiliary power system available (battery powered)

Rated Load: 300 kg (660 lbs)

Drive System: Upper landing 2 HP Drive Box (Roped Sprocket Drive) | Optional Compact Drive system available

Speed: 6 m/min (20 ft/min), slowing prior to corners and when approaching or departing landings | Optional 9m/min (30ft/min)

Controls: Call Station (standard): Keyed with constant pressure switches, 24VDC, equipped with Garaventa Smart-Lite Technology™ | Platform (standard): Keyless with constant pressure directional switches, 24VDC, equipped with Emergency Stop Switch

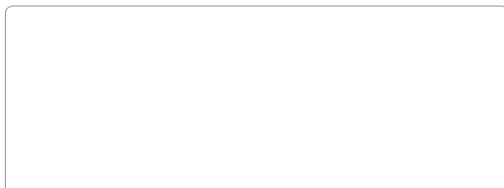
Overspeed Safety: Located at the bottom of the tube assembly | Contains mechanical overspeed sensor and brake, with electrical drive cut-out protection

Safety: Emergency manual lowering and folding | Sensors: Standard under platform obstruction detection | Optional side of hanger optical sensing | Bi-Directional Ramp Sensing | Curved safety arms | Pedestrian safety lights

Finishes: Durable electrostatically applied and baked textured satin grey paint | Optional stainless steel finish and custom RAL colors

Optional Features: Attendant remote control | Autodialer phone | Keyed platform operation for additional security | Auto-fold option keeps stairway clear | Side load platform for confined lower landings | Fold-down seat with seat belt | Dek-Lite (only available with fold-down seat) | Integrated Pedestrian Handrails | Pedestrian Audio Visual Alert (wall mount) | Building fire alarm integration | Outdoor weatherproofing package | Vandal resistant platform lock (electric)


Warranty: Two years | Extended warranty (five additional years) * USA/Canada only



Authorized Garaventa Lift Representative

Contact us today

Phone: +1 604 594 0422
Toll Free: 1 800 663 6556
Web site: www.garaventalift.com

 Printed in Canada
15814-J-PB

© Garaventa Lift. As we are continuously improving our products, specifications outlined in this brochure are subject to change without notice.